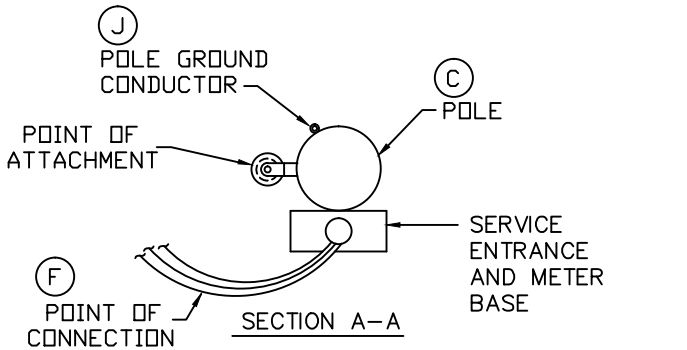


TEMPORARY METER POLE



PERMANENT METER POLE

SEE "SLEMCO - SPECIFICATIONS FOR RESIDENTIAL OVERHEAD METER POLE REQUIREMENTS" FOR MORE INFORMATION.

	SOUTHWEST LOUISIANA ELECTRIC MEMBERSHIP CORPORATION LOUISIANA 9 LAFAYETTE				
	SINGLE-PHASE OVERHEAD METER POLE REQUIREMENTS				
DRAWN BY:		CREATED ON:		SCALE: N.T.S.	
REVISIONS		REVISED BY:	DATE	REV.	DRAWING NO.
			01/15/97	2	<div style="font-size: 2em; font-weight: bold;">6</div>
			03/04/97	3	
		L. A. M.	10/01/99	4	
ENHANCEMENT TO DRAWINGS & SPECIFICATIONS		L. MECHE	05/03/16	5	<div style="font-size: 2em; font-weight: bold;">5</div>

SLEMCO ELECTRICAL STANDARDS

APPROVED:	DATE:	PAGE NUMBER:
		23