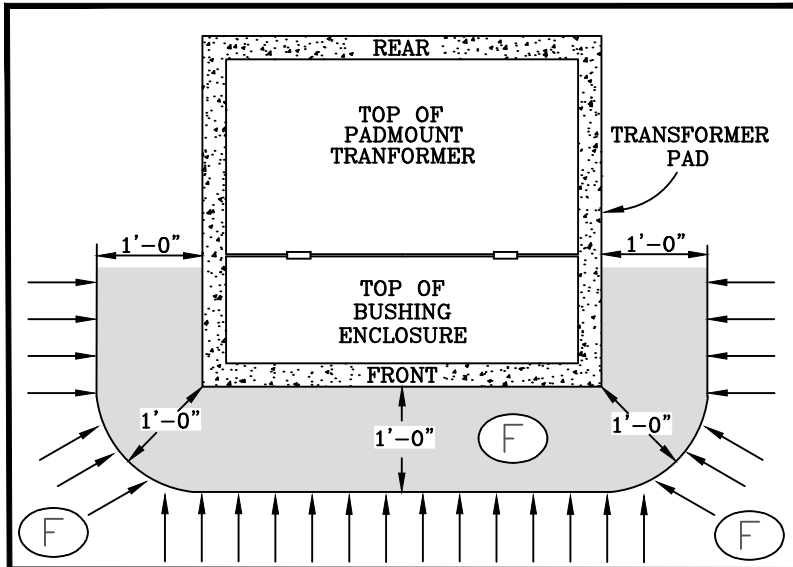


TOP VIEW

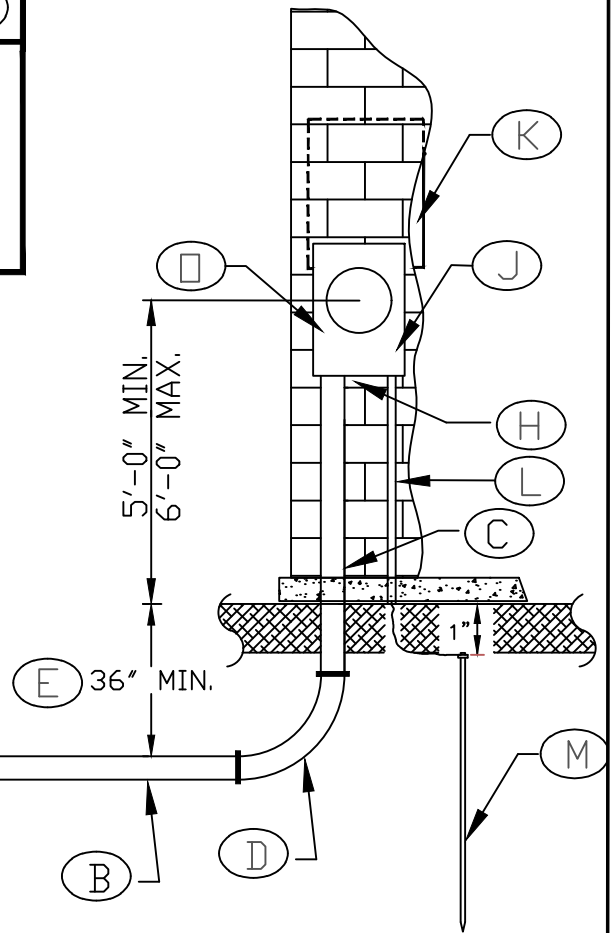
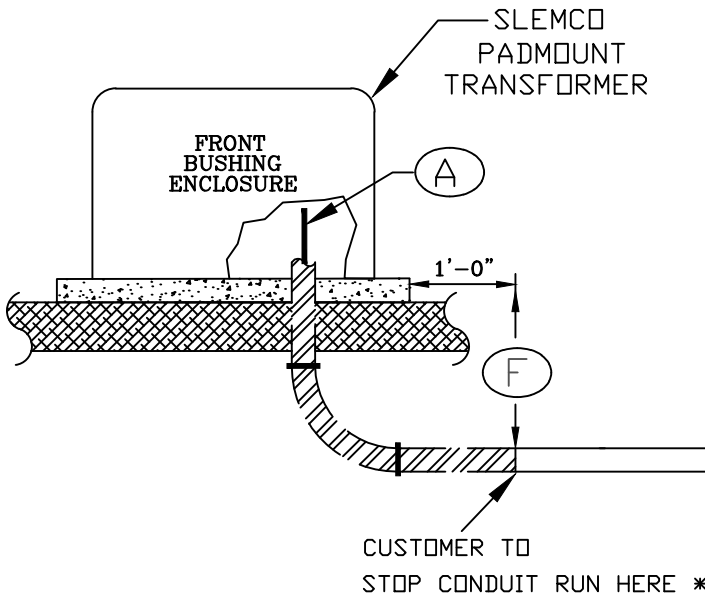


CUSTOMER CONDUIT MUST BE INSTALLED PERPENDICULAR (IN DIRECTION OF ARROWS) TO THE AREA (SHOWN IN GRAY) MARKED AS ONE FOOT FROM EDGE OF PAD SURROUNDING THE BUSHING ENCLOSURE OF THE PADMOUNT TRANSFORMER.

NOTE: APPLICABLE TO BOTH RESIDENTIAL AND COMMERCIAL SERVICES.

**RESIDENTIAL**  
SEE "SLEMCO - SPECIFICATIONS FOR RESIDENTIAL UNDERGROUND SECONDARY REQUIREMENTS" FOR MORE INFORMATION.

**COMMERCIAL**  
SEE "SLEMCO - SPECIFICATIONS FOR COMMERCIAL UNDERGROUND SECONDARY REQUIREMENTS" FOR MORE INFORMATION.



- INSTALLED BY SLEMCO
- INSTALLED BY CUSTOMER

\* STOP CONDUIT RUN 1'-0" FROM PADMOUNT TRANSFORMER PAD OR PEDESTAL EDGE

<b>SLEMCO</b>		SOUTHWEST LOUISIANA ELECTRIC MEMBERSHIP CORPORATION LOUISIANA 9 LAFAYETTE	
<b>SINGLE-PHASE</b>			
<b>UNDERGROUND SERVICE REQUIREMENTS</b>			
<b>FROM AN EXISTING PADMOUNT TRANSFORMER</b>			
DRAWN BY:		CREATED ON: 11/15/97	SCALE: N.T.S.
REVISIONS		REVISED BY	DATE
SPLIT OVERHEAD/UNDERGROUND SERVICE DRAWINGS		L. A. M.	09/28/99
		J. C. D.	03/01/11
ENHANCEMENT TO DRAWINGS & SPECIFICATIONS ADDED DETAILS FROM PAD		L. MECHE	02/12/15
MADE APPLICABLE TO RESIDENTIAL AND COMMERCIAL		H. H. H	03/29/19
		REV.	DRAWING NO.
		2	5

SLEMCO ELECTRICAL STANDARDS

APPROVED:	DATE:	PAGE NUMBER:
		12