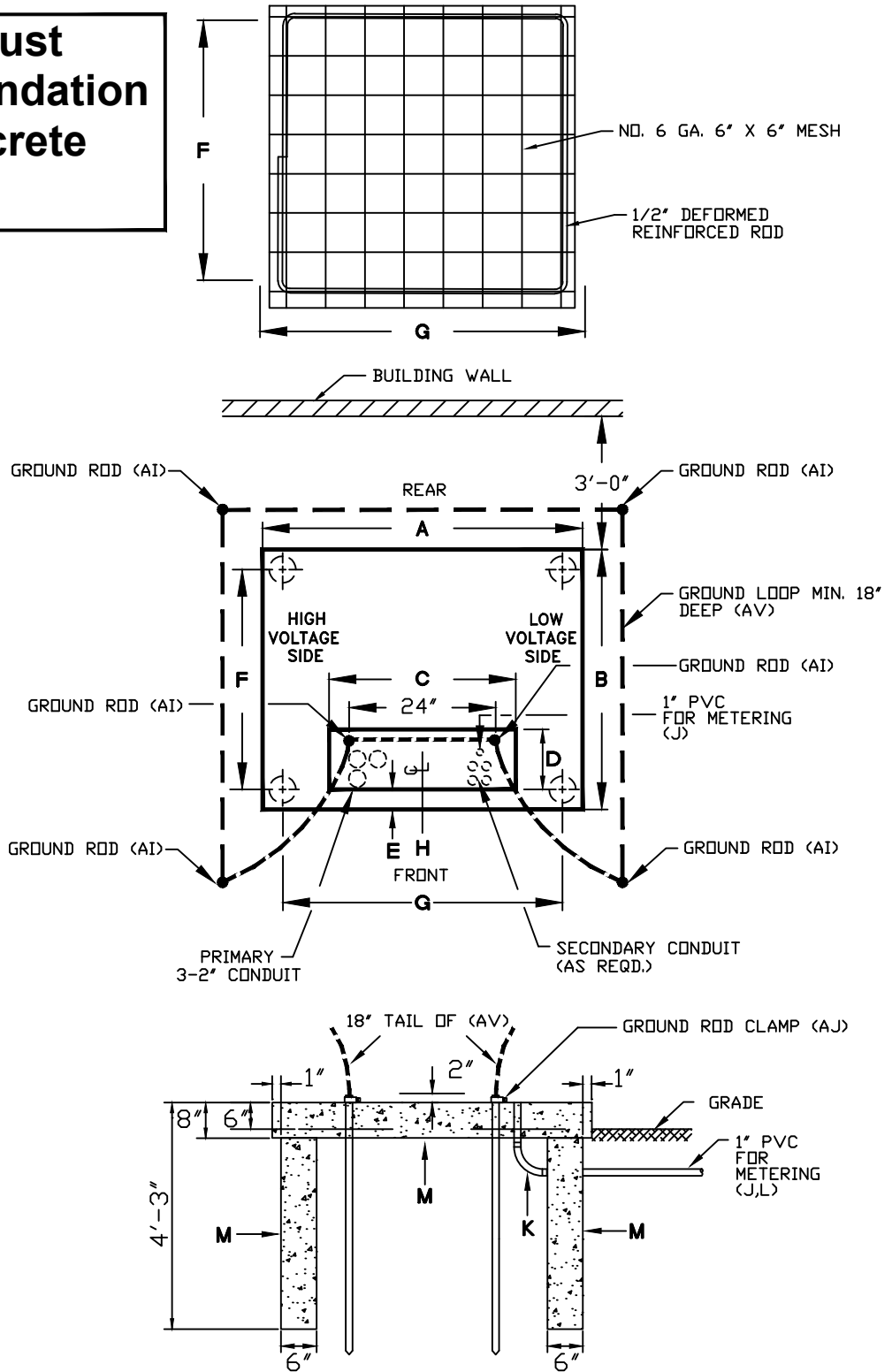


Engineering Service Specifications
Commercial Transformer Foundation Details

SLEMCO must inspect foundation before concrete is poured.



NOTE: THE DIMENSIONS AND ITEMS CAN BE FOUND ON THE MATERIAL LISTS FOR UM1-14A & UM1-14B

	SOUTHWEST LOUISIANA ELECTRIC MEMBERSHIP CORPORATION LOUISIANA 9 LAFAYETTE		
	THREE-PHASE PADMOUNT TRANSFORMER FOUNDATION		

DRAWN BY:		CREATED ON: 1/16/97	SCALE: N.T.S.
REVISIONS	REVISED BY	DATE	REV.

				DRAWING NO.	REV.	
				14	4	
		L. A. M.	10/13/99			2
		J. C. D.	10/18/06			3
		L. MECHE	02/03/16			4

SLEMCO ELECTRICAL STANDARDS		
APPROVED:	DATE:	PAGE NUMBER:
		43

Material List

UM1-14A and UM1-14B

Item	RUS	Description	Quantity									
			UM1-14A				UM1-14B					
			75 KVA	150 KVA	225 KVA	300 KVA	500 KVA	750 KVA	1000 KVA	2500 KVA		
	A	SIDE OF FOUNDATION FORM	108"	108"	108"	108"	108"	108"	108"	108"	108"	108"
	B	SIDE OF FOUNDATION FORM	108"	108"	108"	108"	108"	108"	108"	108"	108"	108"
	C	SIDE OF WINDOW	44"	44"	44"	44"	44"	44"	44"	60"	60"	
	D	SIDE OF WINDOW	13"	13"	13"	13"	13"	13"	13"	20"	20"	
	E	DISTANCE FROM EDGE OF FORM	6"	6"	6"	6"	6"	6"	6"	14"	14"	
	F	SIDE OF REINFORCED FRAME	100"	100"	100"	100"	100"	100"	100"	100"	100"	100"
	G	SIDE OF REINFORCED FRAME	100"	100"	100"	100"	100"	100"	100"	100"	100"	100"
	H	CENTERLINE OF WINDOW	54"	54"	54"	54"	54"	54"	54"	54"	54"	54"
	P	CONNECTOR AS REQUIRED	6	6	6	6	6	6	6	6	6	6
16522013	AV	2/0-19 STR. BARE COPPER --FEET	45	45	45	45						
16524013	AV	4/0-19 STR. BARE COPPER --FEET					45	45	45	45		
17312000	AJ	5/8" GRD ROD CLAMP **EX**	6	6	6	6	6	6	6	6	6	6
53818508	AI	5/8IN X 8FT GROUND ROD	6	6	6	6	6	6	6	6	6	6
76001940	J	1" PVC CONDUIT	10	10	10	10	10	10	10	10	10	10
76211008	K	1" 90 DEG PVC ELBOW **EX**	1	1	1	1	1	1	1	1	1	1
76401010	L	1" PVC COUPLING **EX**	2	2	2	2	2	2	2	2	2	2
78400040	M	CONCRETE -CU. YARD- EX	2.25	2.25	2.25	2.25	2.25	2.25	2.25	2.25	2.25	2.25

NOTE: SLEMCO's Field Engineer may vary the dimensions of the foundation based on the size of the transformer and site conditions.

CPR Account	CPR Description *	CPR Quantity	
M36810040	TRANSFORMER PAD 3 PH CONCRETE	1	1

Valid Assembly (*Construction*) Units

UM1-14A, UM1-14B

Valid Assembly (*Retirement*) Units

UM1-14A, UM1-14B

Design Parameters	 3-PHASE 75, 150, 25, 300, 500, 750, 1000, & 2500 KVA PADMOUNT TRANSFORMER FOUNDATION	UM1-14A UM1-14B	
		Approved	Date