

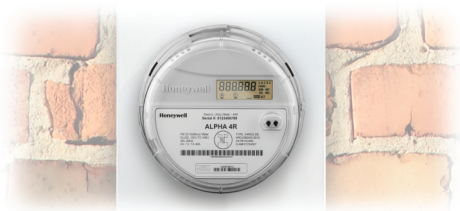
SLEMCO

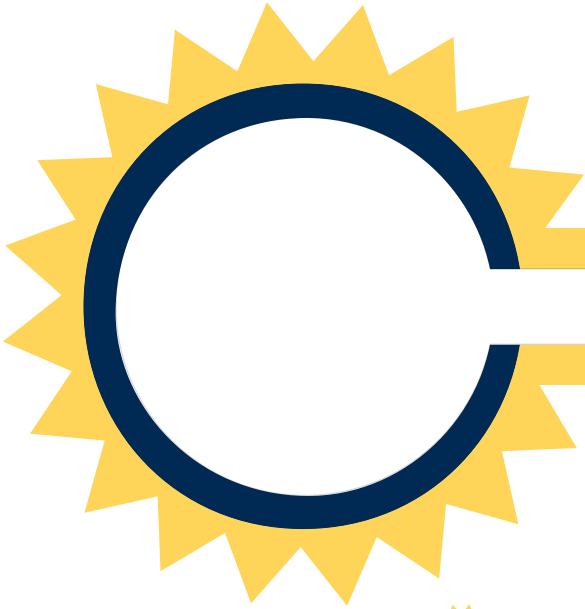
**Your SLEMCO Meter
Has Been Updated!**

**Your Updated SLEMCO Digital
Meter Has Been Installed!**

During the brief upgrade process, power to your home was interrupted for a few minutes, so you'll need to reset electronic devices such as digital clocks, microwaves and stoves.

This update will enable us to respond to emergencies or unexpected outages faster and provide you with the ability to manage your energy electricity usage easier.





SLEMCO

How Your New Meter Will Help Us Serve You Better:

- You will be able to monitor and manage your power usage more easily
- Improved efficiency & reliability
- Automatic notifications to SLEMCO mean faster responses to outages
- Helps us keep the cost of electricity down

Your updated digital SLEMCO meter does everything your old digital meter did plus gives you a level of individual service, response time and troubleshooting second to none in the country. At the same time, it will help us better manage the cost of providing power to every customer we serve.

For more information visit:
SLEMCO.com/MeterUpdate
or call **337-896-5200**

The Pride Behind the Power – The People of SLEMCO

This institution is an equal opportunity employer and provider.