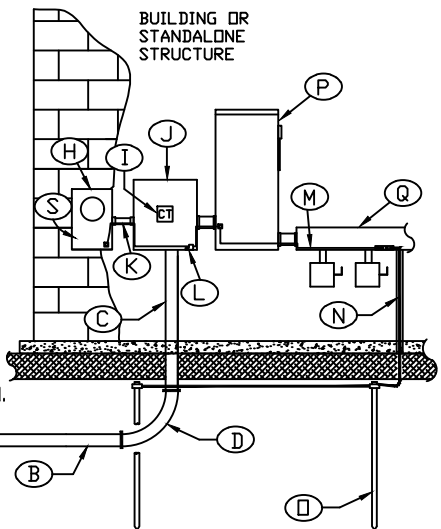
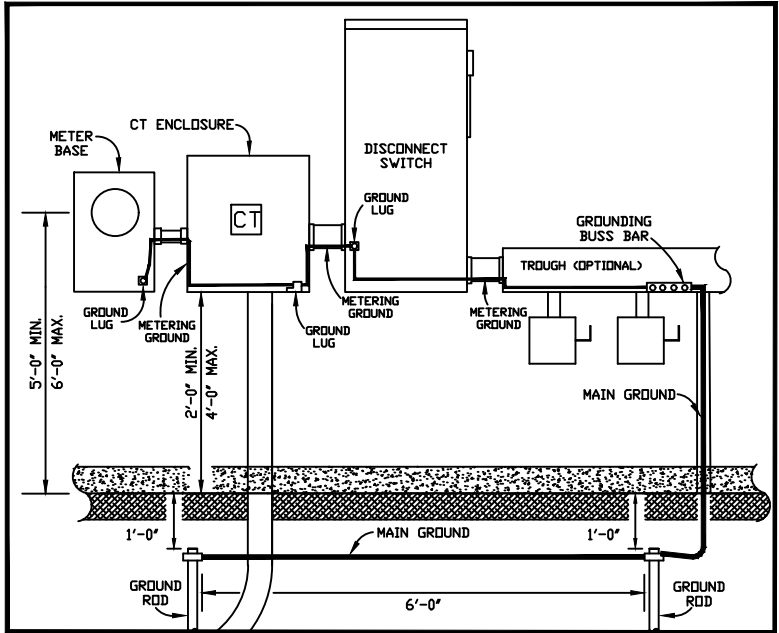
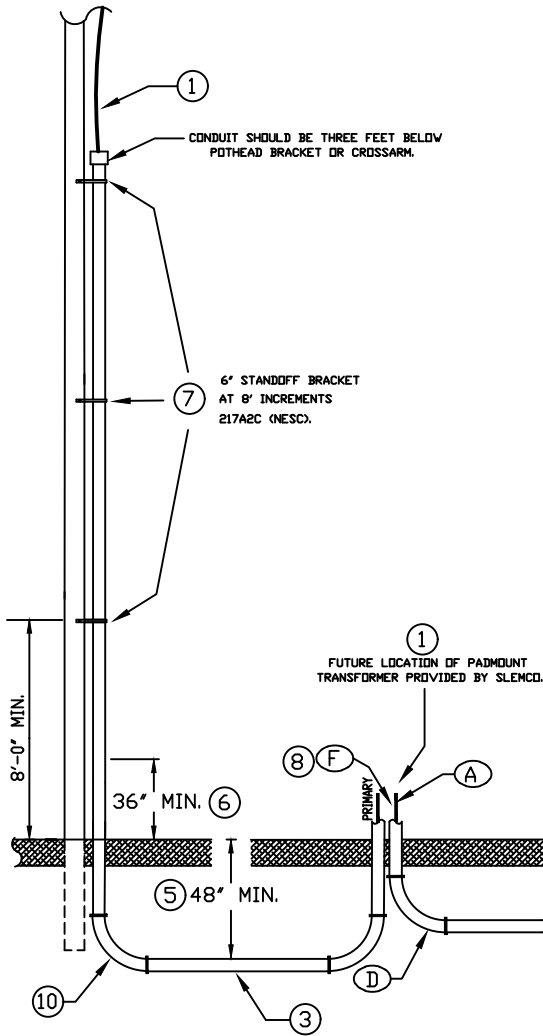


# DETAIL



NOTE: APPLICABLE TO BOTH RESIDENTIAL AND COMMERCIAL SERVICES.

**RESIDENTIAL**

1. SEE "SLEMCO - SPECIFICATIONS FOR RESIDENTIAL UNDERGROUND CURRENT TRANSFORMER METERING REQUIREMENTS" FOR MORE INFORMATION ON ALPHA IDENTIFIERS.
2. SEE "SLEMCO - SPECIFICATIONS FOR RESIDENTIAL UNDERGROUND PRIMARY REQUIREMENTS" FOR MORE INFORMATION ON NUMERICAL IDENTIFIERS.

**COMMERCIAL**

1. SEE "SLEMCO - SPECIFICATIONS FOR COMMERCIAL UNDERGROUND CURRENT TRANSFORMER METERING REQUIREMENTS FOR A SINGLE-PHASE CUSTOMER" FOR MORE INFORMATION ON ALPHA IDENTIFIERS.
2. SEE "SLEMCO - SPECIFICATIONS FOR COMMERCIAL UNDERGROUND PRIMARY REQUIREMENTS FOR A SINGLE-PHASE CUSTOMER" FOR MORE INFORMATION ON NUMERICAL IDENTIFIERS.

	SOUTHWEST LOUISIANA ELECTRIC MEMBERSHIP CORPORATION LOUISIANA 9 LAFAYETTE				
	<b>SINGLE-PHASE CURRENT TRANSFORMER                  METERING REQUIREMENTS FROM A                  NEW PADMOUNT TRANSFORMER</b>				
DRAWN BY:		CREATED ON: 07/20/10		SCALE: N.T.S.	
REVISIONS	REVISED BY	DATE	REV.	DRAWING NO.	REV.
ENHANCEMENT TO DRAWINGS & SPECIFICATIONS	L. MECHE	01/26/16	1	10	2
ADDED DISCONNECT SWITCH	D. C.	02/11/19	2		

**SLEMCO ELECTRICAL STANDARDS**

APPROVED:	DATE:	PAGE NUMBER:
		30