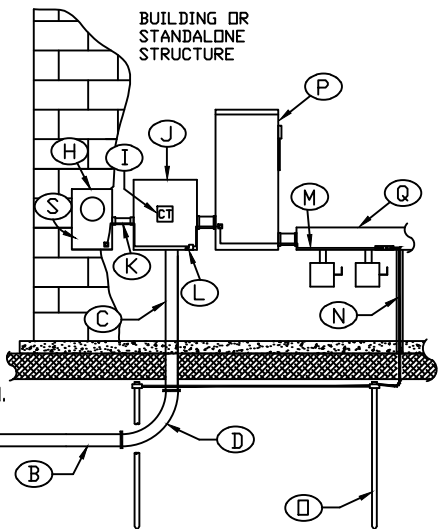
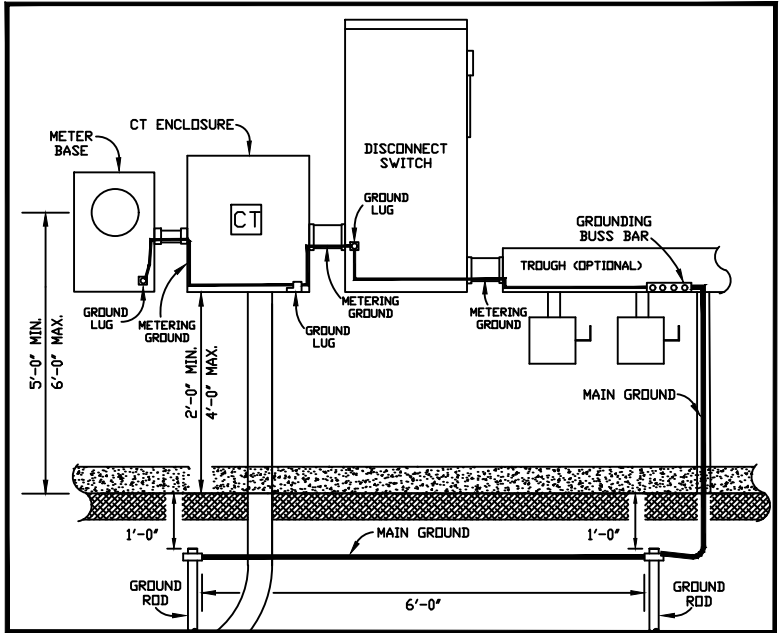
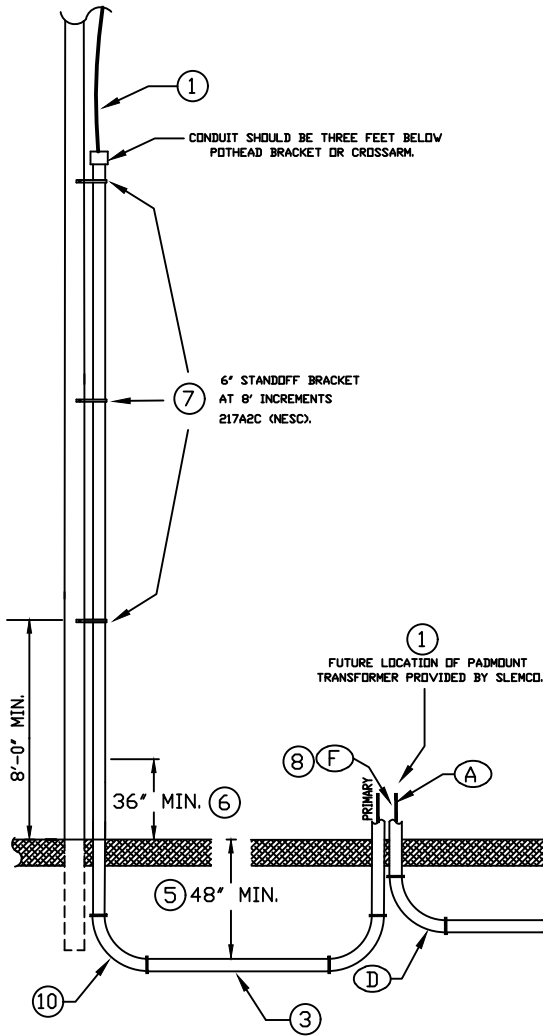


DETAIL



NOTE: APPLICABLE TO BOTH RESIDENTIAL AND COMMERCIAL SERVICES.

RESIDENTIAL

1. SEE "SLEMCO - SPECIFICATIONS FOR RESIDENTIAL UNDERGROUND CURRENT TRANSFORMER METERING REQUIREMENTS" FOR MORE INFORMATION ON ALPHA IDENTIFIERS.
2. SEE "SLEMCO - SPECIFICATIONS FOR RESIDENTIAL UNDERGROUND PRIMARY REQUIREMENTS" FOR MORE INFORMATION ON NUMERICAL IDENTIFIERS.

COMMERCIAL

1. SEE "SLEMCO - SPECIFICATIONS FOR COMMERCIAL UNDERGROUND CURRENT TRANSFORMER METERING REQUIREMENTS FOR A SINGLE-PHASE CUSTOMER" FOR MORE INFORMATION ON ALPHA IDENTIFIERS.
2. SEE "SLEMCO - SPECIFICATIONS FOR COMMERCIAL UNDERGROUND PRIMARY REQUIREMENTS FOR A SINGLE-PHASE CUSTOMER" FOR MORE INFORMATION ON NUMERICAL IDENTIFIERS.

		SOUTHWEST LOUISIANA ELECTRIC MEMBERSHIP CORPORATION LOUISIANA 9 LAFAYETTE			
		SINGLE-PHASE CURRENT TRANSFORMER METERING REQUIREMENTS FROM A NEW PADMOUNT TRANSFORMER			
DRAWN BY:		CREATED ON: 07/20/10	SCALE: N.T.S.		
REVISIONS		REVISED BY	DATE	REV.	DRAWING NO.
ENHANCEMENT TO DRAWINGS & SPECIFICATIONS		L. MECHE	01/26/16	1	10
ADDED DISCONNECT SWITCH		D. C.	02/11/19	2	
APPROVED:		DATE:	PAGE NUMBER:	2	
			31		