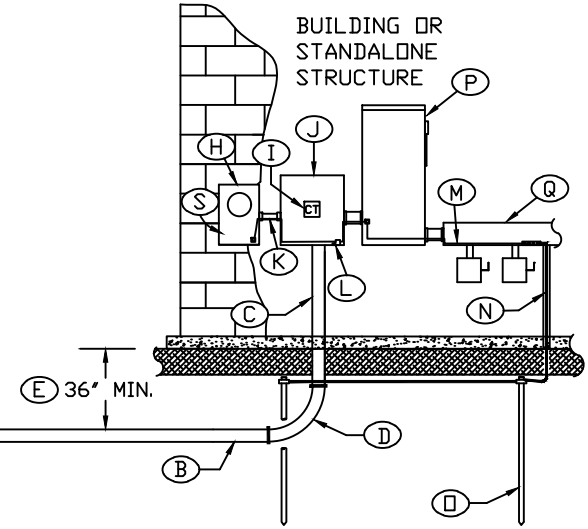
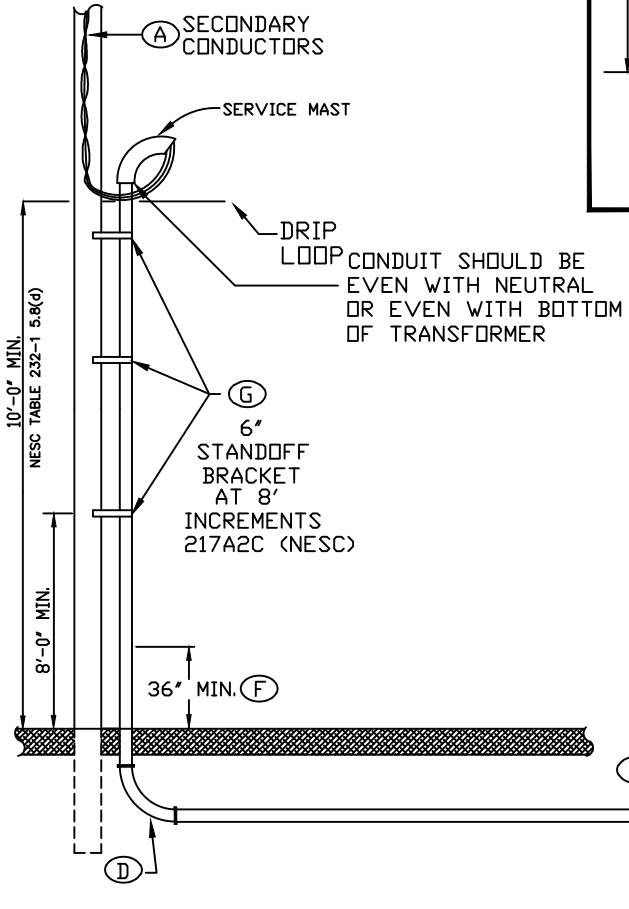
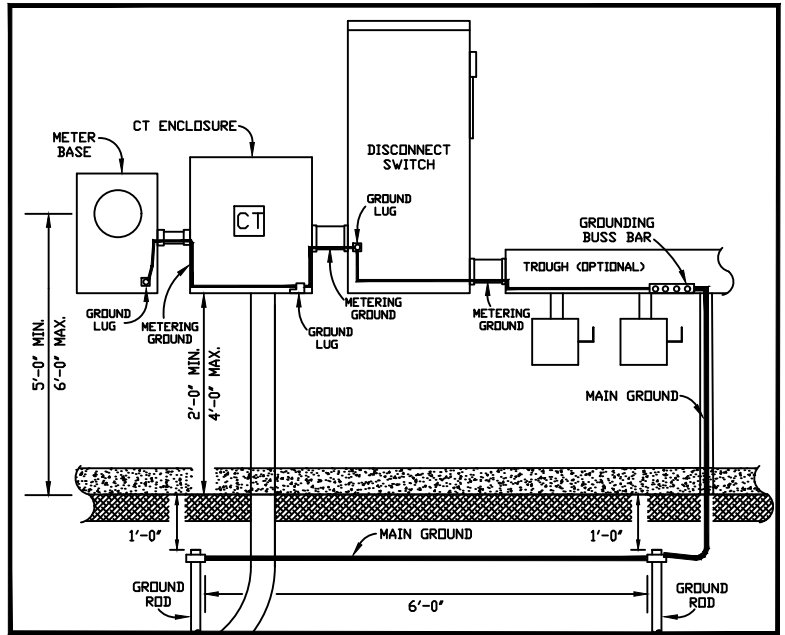


# DETAIL



NOTE: APPLICABLE TO BOTH RESIDENTIAL AND COMMERCIAL SERVICES.

**RESIDENTIAL**

SEE "SLEMCO - SPECIFICATIONS FOR RESIDENTIAL UNDERGROUND CURRENT TRANSFORMER METERING REQUIREMENTS" FOR MORE INFORMATION.

**COMMERCIAL**

SEE "SLEMCO - SPECIFICATIONS FOR COMMERCIAL UNDERGROUND CURRENT TRANSFORMER METERING REQUIREMENTS FOR A SINGLE-PHASE CUSTOMER" FOR MORE INFORMATION.

	SOUTHWEST LOUISIANA ELECTRIC MEMBERSHIP CORPORATION LOUISIANA 9 LAFAYETTE				
	<b>SINGLE-PHASE CURRENT TRANSFORMER                  METERING REQUIREMENTS FROM AN                  OVERHEAD SOURCE</b>				
DRAWN BY: L. A. G.		CREATED ON: 09/08/89		SCALE: N.T.S.	
REVISIONS		REVISED BY	DATE	REV.	DRAWING NO.
			02/25/97	2	<span style="font-size: 2em; font-weight: bold;">11</span>
			07/20/10	3	
			04/21/16	4	
ENHANCEMENT TO DRAWINGS & SPECIFICATIONS		L. MECHE	04/21/16	4	<span style="font-size: 2em; font-weight: bold;">5</span>
ADDED DISCONNECT SWITCH		D. C.	02/11/19	5	

**SLEMCO ELECTRICAL STANDARDS**

APPROVED:	DATE:	PAGE NUMBER:
		32