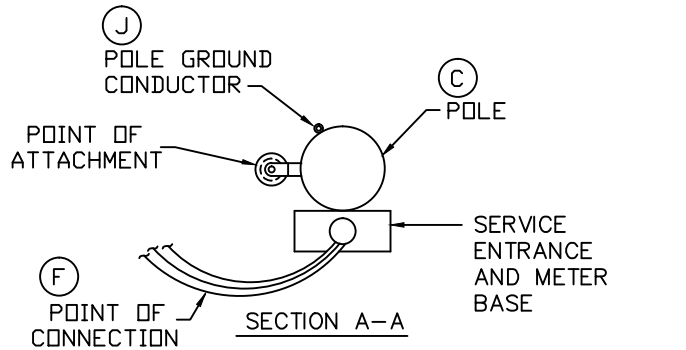


TEMPORARY METER POLE



PERMANENT METER POLE

SEE "SLEMCO - SPECIFICATIONS FOR RESIDENTIAL OVERHEAD METER POLE REQUIREMENTS" FOR MORE INFORMATION.

	SOUTHWEST LOUISIANA ELECTRIC MEMBERSHIP CORPORATION LOUISIANA 9 LAFAYETTE				
	SINGLE-PHASE OVERHEAD METER POLE REQUIREMENTS				
DRAWN BY:	CREATED ON:	SCALE:	N.T.S.		
REVISIONS	REVISED BY:	DATE	REV.	DRAWING NO.	REV.
		01/15/97	2	6	5
		03/04/97	3		
	L. A. M.	10/01/99	4		
	ENHANCEMENT TO DRAWINGS & SPECIFICATIONS	L. MECHE	05/03/16	5	

SLEMCO ELECTRICAL STANDARDS

APPROVED:	DATE:	PAGE NUMBER:
		23