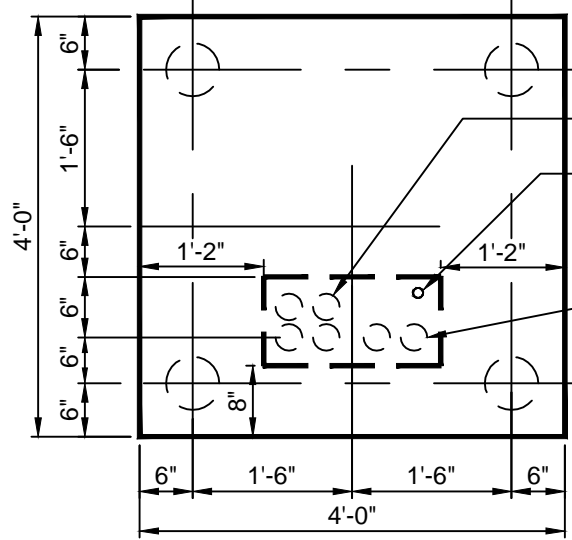


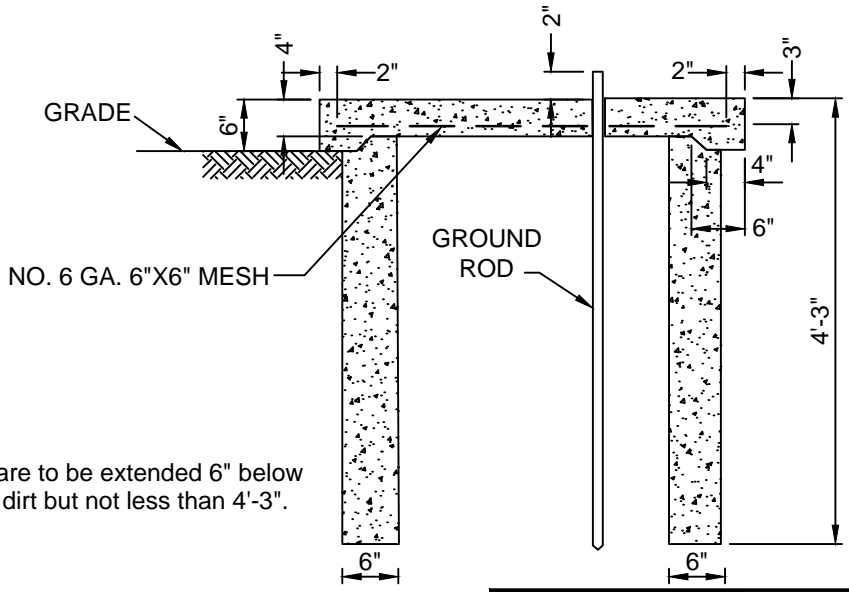
NO. 6 GA. 6"X6" MESH



OPEN SPACE WITH 3" SECONDARY CONDUIT

GROUND ROD

OPEN SPACE WITH 2" PRIMARY CONDUIT



NOTE:
Footings are to be extended 6" below disturbed dirt but not less than 4'-3".

	SOUTHWEST LOUISIANA ELECTRIC MEMBERSHIP CORPORATION LOUISIANA 9 LAFAYETTE		
	SINGLE-PHASE SWITCH CAN OR PADMOUNT TRANSFORMER FOUNDATION		

DRAWN BY:		CREATED ON: 01/16/97	SCALE: N.T.S.
REVISIONS		REVISED BY	DATE

SLEMCO ELECTRICAL STANDARDS		
APPROVED:	DATE:	PAGE NUMBER:
		25

	02/25/97	1	8	3
L. A. M.	10/13/99	2		
L. MECHE	10/22/14	3		