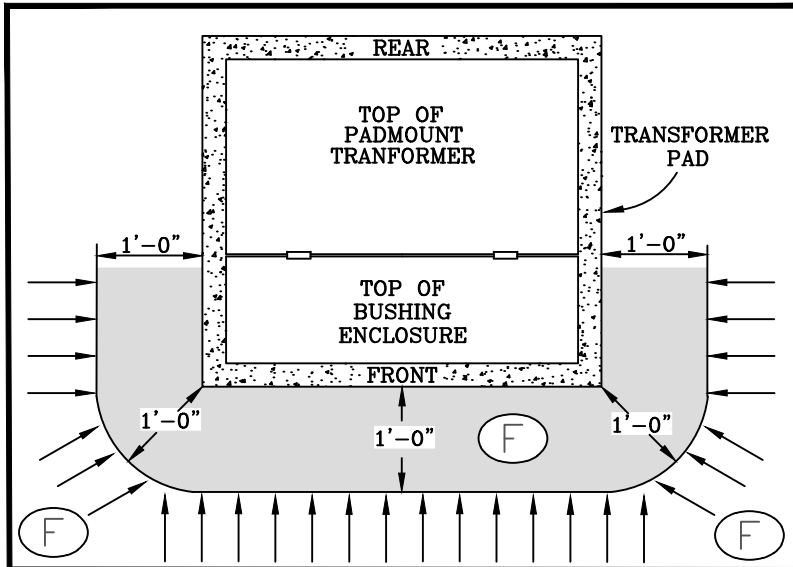


TOP VIEW

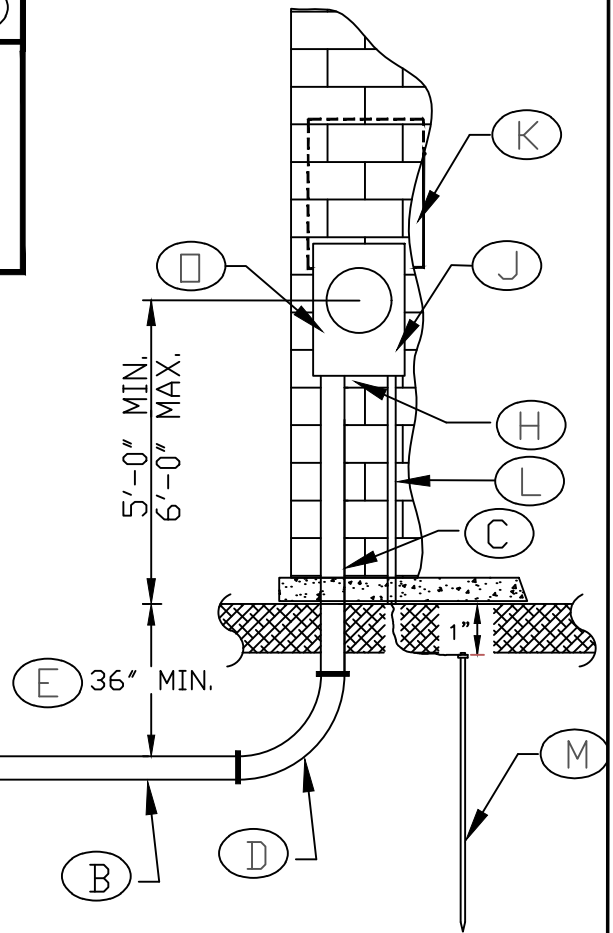
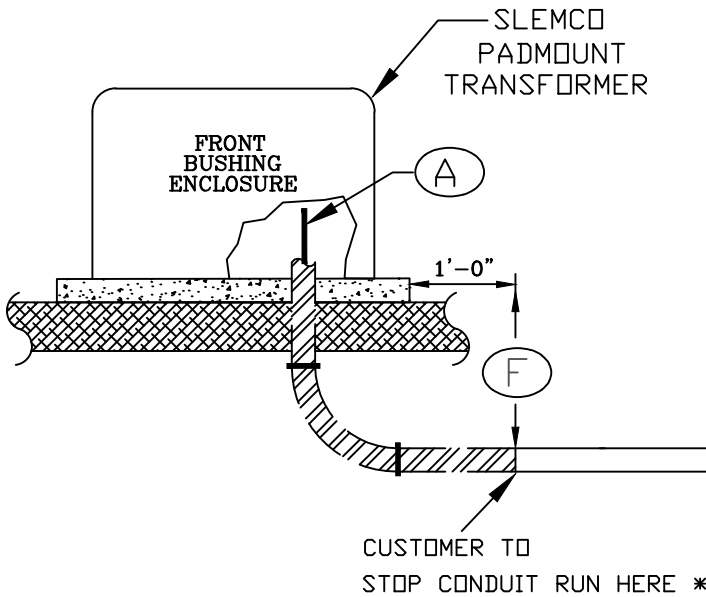


CUSTOMER CONDUIT MUST BE INSTALLED PERPENDICULAR (IN DIRECTION OF ARROWS) TO THE AREA (SHOWN IN GRAY) MARKED AS ONE FOOT FROM EDGE OF PAD SURROUNDING THE BUSHING ENCLOSURE OF THE PADMOUNT TRANSFORMER.

NOTE: APPLICABLE TO BOTH RESIDENTIAL AND COMMERCIAL SERVICES.

**RESIDENTIAL**  
SEE "SLEMCO - SPECIFICATIONS FOR RESIDENTIAL UNDERGROUND SECONDARY REQUIREMENTS" FOR MORE INFORMATION.

**COMMERCIAL**  
SEE "SLEMCO - SPECIFICATIONS FOR COMMERCIAL UNDERGROUND SECONDARY REQUIREMENTS" FOR MORE INFORMATION.



- INSTALLED BY SLEMCO
- INSTALLED BY CUSTOMER

\* STOP CONDUIT RUN 1'-0" FROM PADMOUNT TRANSFORMER PAD OR PEDESTAL EDGE



SOUTHWEST LOUISIANA ELECTRIC  
MEMBERSHIP CORPORATION  
LOUISIANA 9 LAFAYETTE

**SINGLE-PHASE  
UNDERGROUND SERVICE REQUIREMENTS  
FROM AN EXISTING PADMOUNT TRANSFORMER**

DRAWN BY:		CREATED ON: 11/15/97	SCALE: N.T.S.
REVISIONS	REVISED BY	DATE	REV.
SPLIT OVERHEAD/UNDERGROUND SERVICE DRAWINGS	L. A. M.	09/28/99	2
	J. C. D.	03/01/11	3
ENHANCEMENT TO DRAWINGS & SPECIFICATIONS ADDED DETAILS FROM PAD	L. MECHE	02/12/15	4
MADE APPLICABLE TO RESIDENTIAL AND COMMERCIAL	H. H. H	03/29/19	5
			DRAWING NO. <b>2</b>
			REV. <b>5</b>

SLEMCO ELECTRICAL STANDARDS

APPROVED:	DATE:	PAGE NUMBER: 12
-----------	-------	-----------------