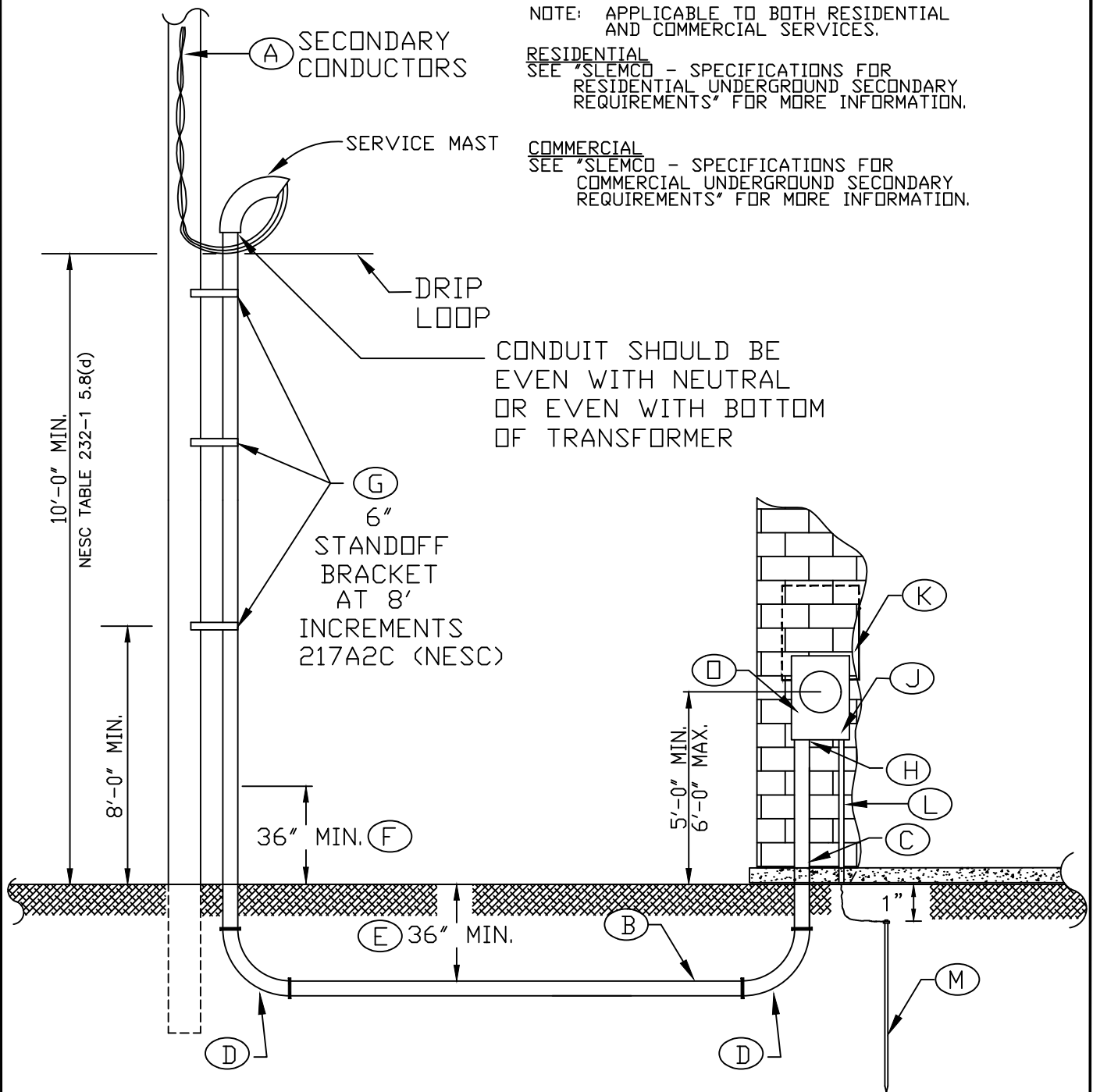



NOTE: APPLICABLE TO BOTH RESIDENTIAL AND COMMERCIAL SERVICES.

RESIDENTIAL
SEE "SLEMCO - SPECIFICATIONS FOR RESIDENTIAL UNDERGROUND SECONDARY REQUIREMENTS" FOR MORE INFORMATION.

COMMERCIAL
SEE "SLEMCO - SPECIFICATIONS FOR COMMERCIAL UNDERGROUND SECONDARY REQUIREMENTS" FOR MORE INFORMATION.



CONDUIT SHOULD BE EVEN WITH NEUTRAL OR EVEN WITH BOTTOM OF TRANSFORMER

		SOUTHWEST LOUISIANA ELECTRIC MEMBERSHIP CORPORATION LOUISIANA 9 LAFAYETTE			
		SINGLE-PHASE UNDERGROUND SERVICE REQUIREMENTS FROM AN OVERHEAD SOURCE			
DRAWN BY:		CREATED ON: 01/15/97	SCALE: N.T.S.		
REVISIONS		REVISED BY	DATE	REV.	DRAWING NO.
SPLIT UNDERGROUND/OVERHEAD DRAWINGS		L. A. M.	09/05/99	2	4
		J. C. D.	03/01/11	3	
ENHANCEMENT TO DRAWINGS & SPECIFICATIONS		L. MECHE	04/21/16	4	
MADE APPLICABLE TO RESIDENTIAL AND COMMERCIAL		H. H. H	03/29/19	5	4

SLEMCO ELECTRICAL STANDARDS		
APPROVED:	DATE:	PAGE NUMBER:
		14